

# SmarterChart™

500 Series Plotters With AIS Option

DIGITAL  
YACHT



## 5" GPS Chart Plotter

- ▶ C-Map MAX chart compatibility for outstanding detail and value
- ▶ Ultra fast chart redraw, pan and zoom capability
- ▶ Waterproof 320 x 240 pixel sunlight viewable, ultra bright display
- ▶ 50 channel internal WAAS enabled GPS with optional external antenna
- ▶ Guardian alarm for depth verification under keel for chosen route
- ▶ Course up, north up and 3D perspective view
- ▶ Soft keys for easy operation and mini joystick for cursor control
- ▶ Flush, bracket and helm pod mounting options
- ▶ Optimised for AIS

### Available in three versions

- Plotter only
- AIS-Plotter Combo - requires connection to VHF antenna or splitter
- Plotter-Sounder Combo - requires compatible transducer

### SmarterChart - Technology redefined in a chartplotter

SmarterChart is Digital Yacht's latest range of 5" colour chart plotters. Designed specifically for boats from 15-40ft and as a cockpit chart display on even bigger boats, the range feature a HiLite, ultra bright display boasting 256 colours and a resolution of 320 x 240 pixels. The range is available in 3 variants - plotter only, plotter with built in AIS and a plotter-sounder version which incorporates a 50/200KHZ sounder. All versions have a super sensitive, 50 channel built in GPS receiver with an optional external GPS antenna also available.

SmarterChart is compatible with C-Map MAX electronic charts for unprecedented value and detail. It also supports advanced features such as free downloadable weather overlays and forecasts, 3D perspective view, photos, tidal heights and currents as well as the Guardian alarm which checks your route for potential grounding issues.

### Smarter & Easier

All systems are intuitive and easy to use thanks to the use of soft keys - keys which change function depending upon the current display with an easy key label prompted on the screen.

### SmarterChart with AIS - Great for anti collision and identification

All commercial vessels over 300 GRT (and many others) are mandatorily required to carry an AIS transponder - a system showing and sending the identity, position, course, speed, closest point of approach and time to closest point of approach to other vessels equipped with AIS. The new, SmarterChart 500AIS plotter with an integrated AIS receiver makes navigation easier, safer and faster with a crystal clear display of AIS equipped vessels overlaid onto the plotter screen. It brings radar like, anti collision features to your chart plotter and can even display the target's identity to make communication easier.

### Smarter fishing too...

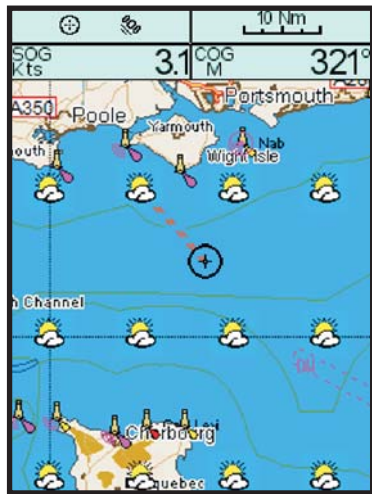
The combo sounder version features a built in, high performance 50/200KHz, dual frequency sounder with powerful 400W output and you can choose from a full range of transducer options. Select either full screen sounder display or split chart/sounder presentation.

**Smarter Navigation from Digital Yacht**

# SmarterChart 500

# DIGITAL YACHT

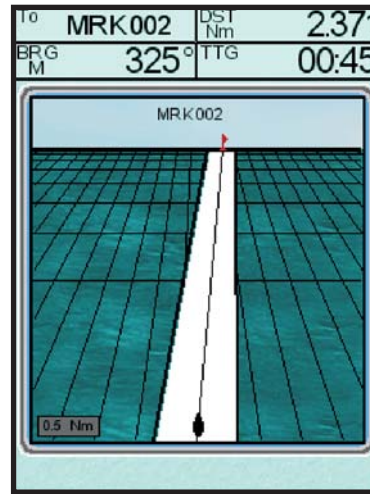
## Typical Screen Shots & Features



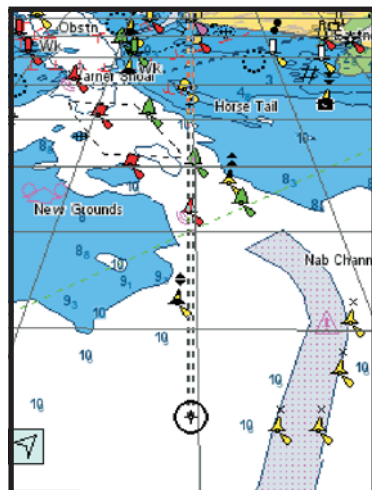
SmarterChart systems support free downloadable weather. All you need is a copy of PC Planner and a blank data card - download the weather from the internet, save to data card and plug into plotter.



SmarterChart is compatible with C-Map MAX charts and supports tidal information. Click on a current icon or tidal diamond and get extended information.



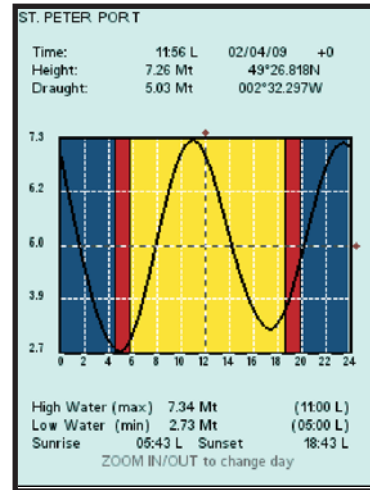
Once you've created your route or GOTO point, you can select an easy to understand steering screen called HIGHWAY. Get a perspective view of your destination with an easy road to follow showing course deviation.



Select perspective view for a 3D chart display - great for navigation in an estuary or river and see animated buoys and lights.

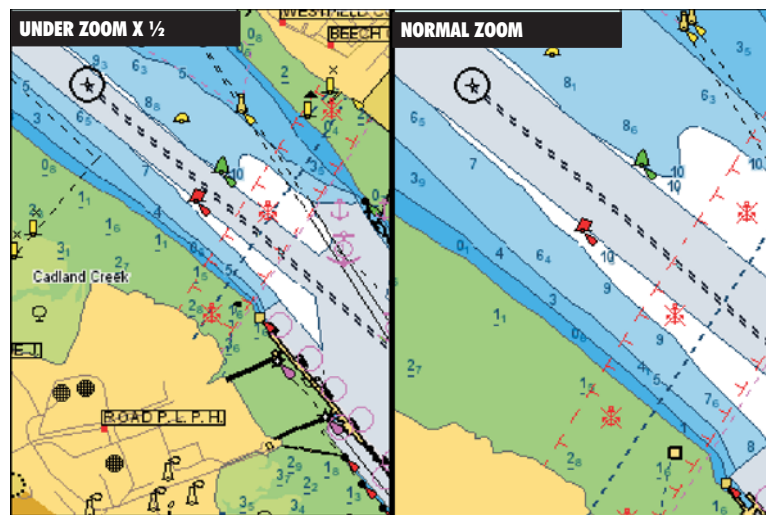


For the version with internal AIS, instantly see time to closest point of approach for any target - great for anti collision. Bring up the vessel call sign and name at the touch of a key.



Click on the T icon on a chart and get detailed tidal rise and fall information for the point. Change the date easily too

## FlexiZoom Brings Detail To Every Chart Scale



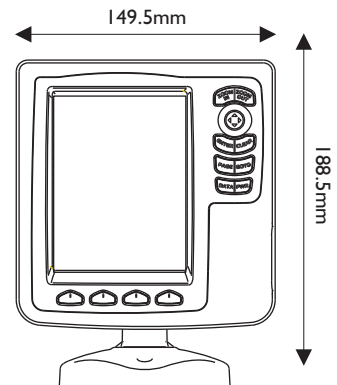
FlexiZoom allows detail that is normally only present on small scale charts to be displayed as you zoom out to extended ranges. In many instances it's handy to be able to see a specific mark or buoy on a large scale chart and flexiZoom allows this

## Home planning with PC Planner



Get the PC Planner kit for use on your home or on board PC. It's supplied with a USB reader and software which allows viewing of C-Map charts on your PC together with passage planning tools to create waypoints and routes plus even print charts. Data can be saved on a USER DATA card and transferred from PC to SmarterChart. It's also the gateway for C-Forecast weather data - download the FREE weather from the internet, save onto the memory card and transfer to your plotter for an animated 4 day weather forecast including wind, wave, pressure and temperature information.

## Specifications

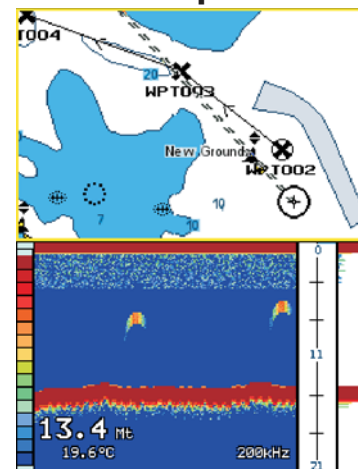


- DIMENSIONS** 149.5 x 183.5 x 94mm (inc rear cables)
- SCREEN** 12.7cm SunView Display 256 colours
- GPS** Internal 50 channel
- BASE MAP CHARTING** YES Global
- WAYPOINTS** C-Map MAX Pro/NT Format 1000
- ROUTES TRACKS** 20 Reversible Routes plus GOTO function 10 Tracks

## AIS Option

The SmarterTrack 500 AIS version features a high performance dual channel AIS receiver which is built into the plotter. Simply connect to a VHF antenna via the rear BNC antenna socket for a detailed overlay of AIS targets. SmarterTrack will also output AIS target data to other system via an external NMEA interface.

## Sounder Option



SmarterTrack combo sounder version offers a full featured 50/200KHz internal sounder compatible with a range of 600W Airmar transducers.

## Helm Mount Option

Once you see SmarterTrack in action you'll want it right next to the helm. Our custom MSP6 pod fits to any 7/8" to 1.25" rail and allows easy, secure installation of SmarterTrack to your helm. Supplied with stainless steel clamp to fit to horizontal rail



## Dealer Information